

Sample Paper 2 HL and SL Geography

1 hour 15 minutes

Instructions to students

- Section A: answer all questions.
- Section B: answer the question.
- Section C: answer one question.

Answers must be written in the boxes provided.

The maximum mark for this examination paper is [50 marks]

Section A

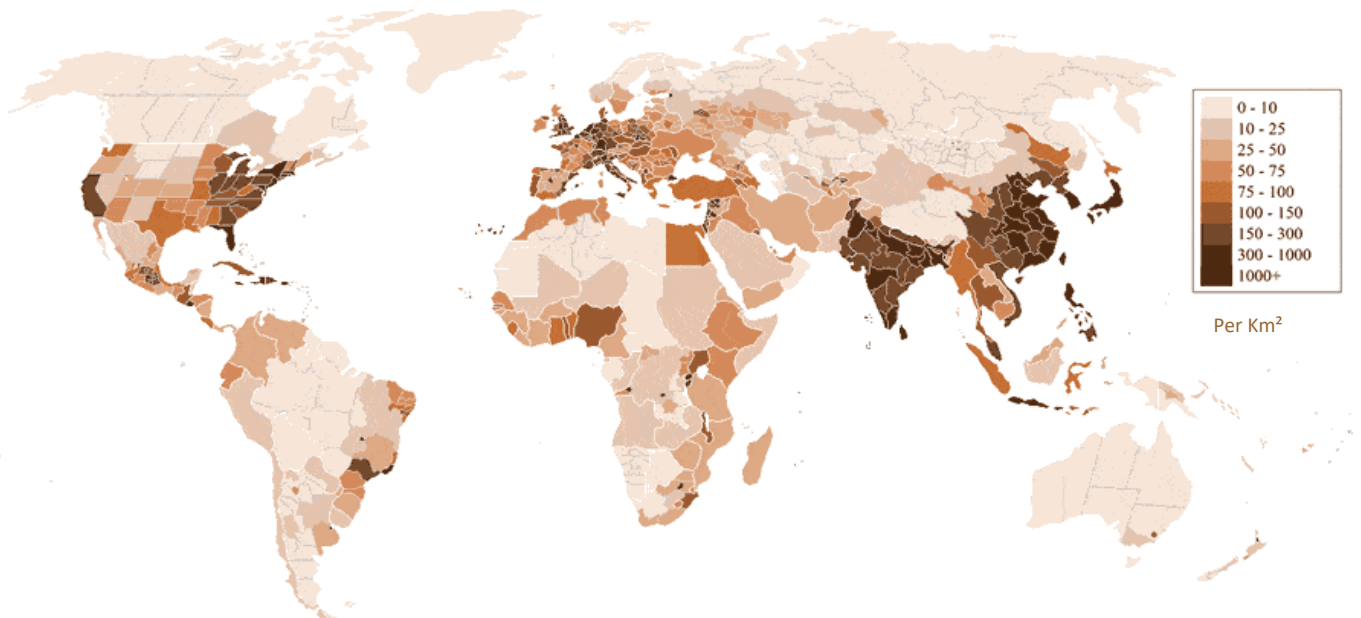
Answer all questions

Answers must be written in the boxes provided

When relevant, answers should refer to case studies or examples, and where appropriate include well-drawn maps or diagrams.

1. Changing population

The map shows the population density in 2018



(b) (i) State one disadvantage of presenting population data in this way

[1]

.....

.....

(ii) State one advantage of presenting population data in this way

[1]

.....

(b) (i) Briefly describe the pattern of population density in South America

[2]

(Question 1 continued)

.....

.....

.....

.....

(ii) Suggest **two** reasons for this distribution in population in South America [2]

Reason 1

.....

.....

Reason 2

.....

.....

(c) Explain **two** possible problems caused by the population distribution in South America [2+2]

Problem 1

.....

.....

.....

.....

Problem 2

.....

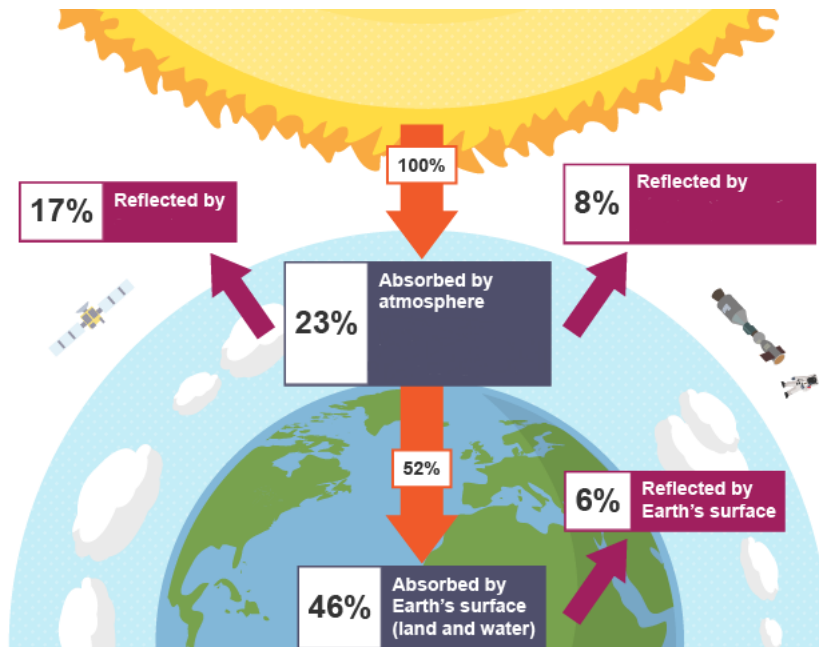
.....

.....

.....

2. Global Climate Vulnerability and Resilience

The diagram shows the Earth's heat balance.



(a) (i) State the one element of the atmosphere that reflects 17% of incoming radiation [1]

.....

(ii) State one other atmospheric element that reflects incoming solar radiation [1]

.....

(iii) State the atmospheric element responsible for absorbing 19% of the total 23% of incoming solar radiation [1]

.....

(Question 2 continued)

(b) State one carbon storage and explain how it is impacted by climate change [1+2]

Carbon Storage

.....

Impact of climate change

.....

.....

.....

.....

(c) Explain two possible impacts of climate change on health of people [2+2]

Impact 1 on Health

.....

.....

.....

.....

Impact 2 on Health

.....

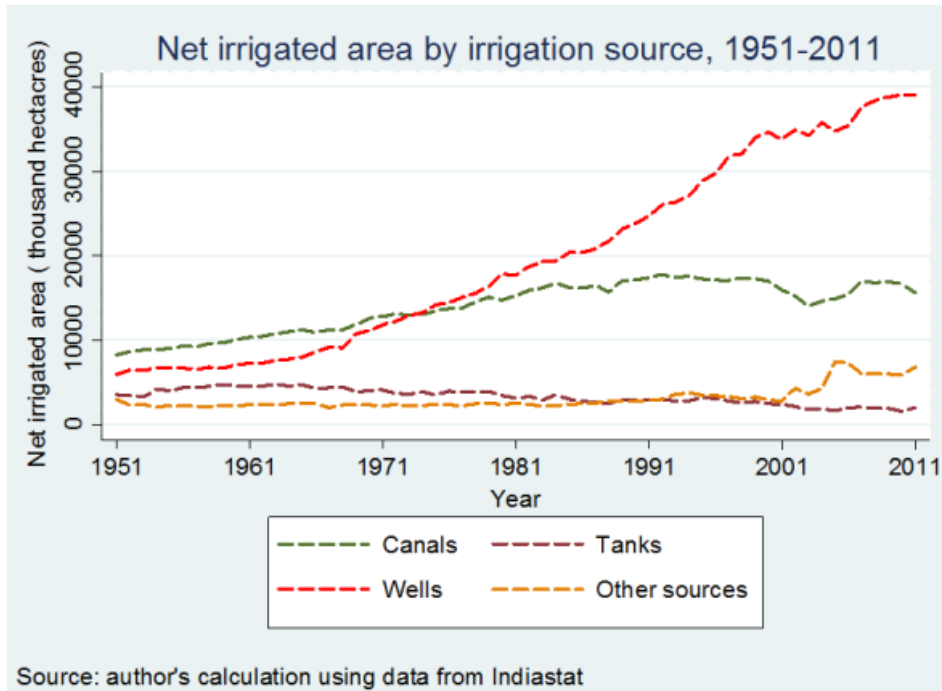
.....

.....

.....

3. Global Resource Consumption and Security

The graph shows the net irrigated area by irrigation source in India between 1951 -2011



(a) (i) State the irrigation source that has grown the most [1]

.....

(ii) Compare the growth in use of wells and canals [2]

.....

.....

.....

.....

This question continues over the page

(Question 3 continued)

(b) Explain one consequence of India's increase in irrigation

[2]

.....

.....

.....

.....

(c) State one factor other than food and water that may affect India's future security and explain its link with food and water [1+2+2]

Security Risk.....

Link to food and water 1

.....

.....

.....

.....

Link to food and water 2

.....

.....

.....

.....

Section B

Answer the following question.

4. Refer to the infographic .The infographic shows information on the Paris Climate Agreement from 2015

(a) (i) State the country/region with the highest emissions of greenhouse gases [1]

.....

(ii) Suggest one way that the data on emissions may be seen as misleading [1]

.....

(b) Suggest two reasons why gas as an energy source is going to increase in its use, whilst other greenhouse gas emitting energies will fall [2+2]

Reason 1

.....

.....

.....

.....

Reason 2

.....

.....

.....

.....

(Question 3 continued)

(c) Suggest two ways the infographic could have been improved to show greater representation of developing nations [2+2]

Improvement 1

.....

.....

.....

.....

Improvement 2

.....

.....

.....

.....

Section C

Answer **one** question

Where relevant, answers should refer to case studies or examples, and where appropriate include well-drawn maps or diagrams.

5. “Adaptation at a range of scales is more important than mitigation in the management of climate change” To what extent do you agree with this statement? [10]

6. “The circular economy offers us the greatest opportunity to achieve sustainable resource consumption”. To what extent do you agree with this statement? [10]

.....

.....

.....

.....

.....

.....

.....

.....

.....

.....

.....

.....

.....

.....

.....

.....

.....

.....

.....

.....

.....

.....

A large rectangular area containing 25 horizontal dotted lines, intended for writing or drawing.

A large rectangular area containing 25 horizontal dotted lines, intended for writing or drawing.

A large rectangular area containing 25 horizontal dotted lines, intended for writing or drawing.

A large rectangular area containing 25 horizontal dotted lines, intended for writing or drawing.

A large rectangular area containing 25 horizontal dotted lines, intended for writing or drawing.

A large rectangular area containing 25 horizontal dotted lines, intended for writing or drawing.