

1 NO POVERTY

How can you tell that someone is living in poverty?

- a) The person doesn't have a smartphone
- b) The person is not able to fulfil their basic needs, including food, healthcare, education among others
- c) The person is not well dressed



2 ZERO HUNGER

Is enough food produced in the world to feed everyone?

- a) No, because I get hungry all the time
- b) Enough healthy food is produced, but not enough sweets and fizzy drinks
- c) There is enough food but not everyone can afford to buy food



3 GOOD HEALTH

What is the average life expectancy in the world?

- a) 50 years
- b) 60 years
- c) 70 years



4 QUALITY EDUCATION

Most of the children who do not go to school live on which continent?

- a) Europe
- b) Asia
- c) America
- d) Africa



5 GENDER EQUALITY

Only one country in the world has more women than men in parliament in 2017. Which country is it?

- a) The United Kingdom
- b) Norway
- c) France
- d) Rwanda
- e) Peru



6 CLEAN WATER AND SANITATION

How can you use less water?

- a) There's no shortage of water where I live, I can use as much as I like
- b) By taking a shower rather than a bath
- c) By drinking sweetened fizzy drinks instead of water



7 RENEWABLE ENERGY

Spot the wrong answer. Clean energy can be produced with...

- a) Coal
- b) Sun
- c) Wind
- d) Waves



8 DECENT WORK AND ECONOMIC GROWTH

Should women be paid the same as men if they have the same job?

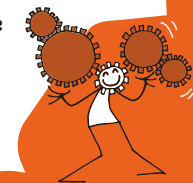
- a) Yes, men and women have the same rights
- b) No, men should be paid more because they are stronger



9 INDUSTRY, INNOVATION AND INFRASTRUCTURE

What is a sustainable factory?

- a) A factory that has been built long ago and is still functioning
- b) A factory that produces toxic waste
- c) A factory that causes no damage to the environment



10 REDUCED INEQUALITIES

What is the best way to fight poverty?

- a) Do nothing and ignore the problem
- b) Share the wealth produced in the world
- c) Prevent foreigners from entering your country



11 SUSTAINABLE CITIES AND COMMUNITIES

How many people in developing countries live in slums?

- a) 30%
- b) 55%
- c) 80%



12 RESPONSIBLE CONSUMPTION AND PRODUCTION

Statement: there are plenty of fish in the sea.

- a) True, I can eat as many as I want!
- b) False. Overfishing, pollution and climate change are reducing the populations of fish in the oceans



13 CLIMATE ACTION

What is renewable energy?

- a) A brand of a energy drink
- b) Energy generated from natural resources—such as sunlight and wind
- c) A source of energy with a renewable subscription fee



14 LIFE BELOW WATER

Which of the following contribute to marine pollution...

- a) Litter on the beach
- b) Jellyfish and crabs
- c) Seaweed



15 LIFE ON LAND

We must protect our forests to fight climate change because :

- a) Forests are good places to play
- b) Trees produce oxygen
- c) We need wood for building houses



16 PEACE, JUSTICE AND STRONG INSTITUTIONS

Which of the following is a democracy?

- a) A country ruled by a dictator
- b) A country ruled by the people
- c) A country ruled only by men



17 PARTNERSHIPS FOR THE GOALS

A partnership is...

- a) When you are playing with a friend and you pretend to be parents
- b) When people and organisations support each other to achieve a common goal
- c) When two pupils eat at the same table every day



SUSTAINABLE DEVELOPMENT GOALS

1 NO POVERTY

Are there fewer people living in poverty now than there were 25 years ago?

- a) No, 1 billion more people are now living in poverty
- b) Yes, 1 billion people have been lifted out of poverty



2 ZERO HUNGER

True or false: the number of starving people in the world is decreasing.

- a) True
- b) False



3 GOOD HEALTH

Choose two things that could help stop children under 5 from dying.

- a) Nutritious food
- b) Mobile phones
- c) Clean drinking water
- d) Fizzy drinks



4 QUALITY EDUCATION

True or false: fewer girls than boys attend school worldwide.

- a) False
- b) True



5 GENDER EQUALITY

Which country was the first in the world to give women full political rights (the right to vote and be elected)?

- a) France
- b) The United States of America
- c) Finland



6 CLEAN WATER AND SANITATION

Potable water is:

- a) Water that is safe to drink
- b) Water that we can find in flower pots
- c) Water that looks clean



7 RENEWABLE ENERGY

What does energy efficiency mean?

- a) When a lamp gives a bright light
- b) When you can use energy without having to worry about your consumption
- c) A device or building that uses relatively little energy to provide it with the power it needs



8 DECENT WORK AND ECONOMIC GROWTH

If you have a job, does that mean you are safe from poverty?

- a) Yes, because you work to earn money
- b) No, you can have a job and live in poverty



9 INDUSTRY, INNOVATION AND INFRASTRUCTURE

True or false: everyone has access to the internet.

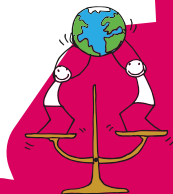
- a) True
- b) False



10 REDUCED INEQUALITIES

True or false: in the last 25 years, the number of people in extreme poverty has NOT gone down

- a) True
- b) False



11 SUSTAINABLE CITIES AND COMMUNITIES

Solutions to save energy and protect the planet already exist. Which of these are not real?

- a) Bicycles
- b) Electric buses
- c) Flying cars



12 RESPONSIBLE CONSUMPTION AND PRODUCTION

How much food is wasted every day worldwide?

- a) None, as all the food is eaten or frozen
- b) One third of all food produced
- c) Very little, as people have dramatically reduced the waste



13 CLIMATE ACTION

Which of the following statements is correct?

- a) Global warming doesn't exist because last winter was really cold
- b) Global warming doesn't exist because there are still global icecaps
- c) Global warming will lead to more flooding and heavy storms



14 LIFE BELOW WATER

What is overfishing?

- a) Eating too much fish and getting sick
- b) Taking more fish out of the sea than can be replaced naturally
- c) Overfeeding fish so they get bigger



15 LIFE ON LAND

The extinction of animal species is due to...

- a) Human activities
- b) Animals eating each other
- c) The frequency emissions of mobile phones



16 PEACE, JUSTICE AND STRONG INSTITUTIONS

What is a child soldier?

- a) A child who plays war games with other children
- b) A child who is enrolled in an armed group
- c) Both



17 PARTNERSHIPS FOR THE GOALS

How does fairtrade contribute to the SDGs?

- a) It offers better trading conditions to producers and workers
- b) It increases profits for industries
- c) It encourages producers to hire children



SUSTAINABLE DEVELOPMENT GOALS

1 NO POVERTY

How many people are living in extreme poverty worldwide?

- a) Around 800 people
- b) Around 8,000 people
- c) Over 800 million people



2 ZERO HUNGER

How many people in the world are not eating enough to be in good health?

- a) Almost 90 people
- b) Almost 9,000 people
- c) Almost 900 million people



3 GOOD HEALTH

What is best for a newborn baby?

- a) Being bottle fed
- b) Drinking water
- c) Breastfeeding



4 QUALITY EDUCATION

Education...

- a) Will make it hard for you to get a job
- b) Will help you get a job and improve your life
- c) Is only useful for very smart kids



5 GENDER EQUALITY

How many countries in the world had a woman as president or head of state in 2017?

- a) 5
- b) 20
- c) 100



6 CLEAN WATER AND SANITATION

Where does most of the wastewater resulting from human activities go?

- a) It is treated and recycled
- b) It is stored in safe places
- c) It is discharged into rivers or seas without any treatment against pollution



7 RENEWABLE ENERGY

Global warming happens mainly because of an increase of a certain gas in the atmosphere. Which gas is it?

- a) Ozone
- b) Carbon dioxide
- c) Mustard Gas



8 DECENT WORK AND ECONOMIC GROWTH

What does "economic growth" mean?

- a) You save more money every month
- b) Prices are increasing
- c) An increase in the value of goods and services produced by a country



9 INDUSTRY, INNOVATION AND INFRASTRUCTURE

True or false: everyone has access to electricity.

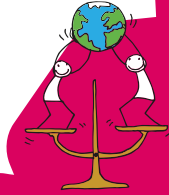
- a) True
- b) False



10 REDUCED INEQUALITIES

At school...

- a) Girls should learn to knit and cook
- b) Boys should learn science and technology
- c) Girls and boys should have equal learning opportunities



11 SUSTAINABLE CITIES AND COMMUNITIES

What is renewable energy?

- a) Energy that comes from natural sources and never runs out
- b) Energy from outer space
- c) A form of energy used by the pharaohs of ancient Egypt



12 RESPONSIBLE CONSUMPTION AND PRODUCTION

Oil is the most polluting industry in the world. Which industry comes second?

- a) Coal extraction
- b) Textile industry
- c) Cellphone industry



13 CLIMATE ACTION

Countries should make sure they use more:

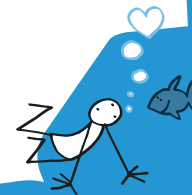
- a) Coal and oil for energy
- b) Nuclear energy
- c) Energy from the sun, wind and waves



14 LIFE BELOW WATER

What percentage of all the species living in the ocean have been identified?

- a) Around 5%
- b) Around 50%
- c) More than 80%



15 LIFE ON LAND

Biodiversity is...

- a) The diversity of animal and plant species living on our planet
- b) The variety of healthy products you can find in a supermarket
- c) The number of planets where humans could live



16 PEACE, JUSTICE AND STRONG INSTITUTIONS

A "blue helmet" is...

- a) A soldier who works with the United Nations to maintain peace
- b) A firefighter in the navy
- c) A child soldier



17 PARTNERSHIPS FOR THE GOALS

What has made communication among partners easier?

- a) Messenger pigeons
- b) The internet
- c) Messages in bottles



SUSTAINABLE DEVELOPMENT GOALS

1 NO POVERTY

Most of the people living in poverty live in:

- a) Europe
- b) North and South America
- c) Africa and Asia



2 ZERO HUNGER

Which of these statements is true?

- a) You need at least one sweetened fizzy drink per day to stay healthy
- b) There is enough food to feed the world
- c) You can stay healthy if you don't eat vegetables and fruits



3 GOOD HEALTH

How many minutes of exercise should children between 5 and 17 do everyday?

- a) 60 minutes
- b) 30 minutes
- c) Children don't need to exercise everyday



4 QUALITY EDUCATION

Quality education is good for...

- a) Improving health
- b) Reducing poverty
- c) Both



5 GENDER EQUALITY

Who should do the cooking and cleaning in the house?

- a) The males in the house
- b) The females in the house
- c) Everyone should help out



6 CLEAN WATER AND SANITATION

Which statement is correct?

- a) More people have a mobile phone than a toilet
- b) Most people have toilets but can't afford a mobile phone
- c) Everyone has both a mobile phone and a toilet



7 RENEWABLE ENERGY

Some energy sources are renewable, why?

- a) Because they do not pollute
- b) Because they are brand new
- c) Because they can be replenished by nature in a short time



8 DECENT WORK AND ECONOMIC GROWTH

How many people are jobless worldwide?

- a) 2 million
- b) 20 million
- c) 200 million



9 INDUSTRY, INNOVATION AND INFRASTRUCTURE

Which one of these innovations is the best at fighting climate change?

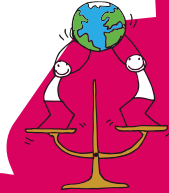
- a) An electric car
- b) A diesel car
- c) A petrol car



10 REDUCED INEQUALITIES

To reduce health inequalities all children should have access to:

- a) Clean drinking water
- b) Medical care
- c) Vaccines
- d) All of the above



11 SUSTAINABLE CITIES AND COMMUNITIES

Where is the fastest urbanisation in the world happening?

- a) Europe
- b) The United States of America
- c) In developing countries



12 RESPONSIBLE CONSUMPTION AND PRODUCTION

Plastic bags are a big problem for our environment. Which country was the first to ban plastic bags?

- a) Sweden
- b) Russia
- c) Rwanda



13 CLIMATE ACTION

Who is in charge of looking after the planet?

- a) Scientists
- b) Famous people
- c) Government officials
- d) Everyone



14 LIFE BELOW WATER

True or false: if we do not change our habits by 2050 there will be more plastic in the ocean than there are fish.

- a) True
- b) False



15 LIFE ON LAND

Globally, forests are...

- a) Growing, there are trees everywhere
- b) Being cut down at the same rate they are being replanted
- c) Vanishing, around half of all forests have already disappeared



16 PEACE, JUSTICE AND STRONG INSTITUTIONS

What is a refugee camp?

- a) A summer camp in the mountains
- b) A camp for the protection of people when they flee from their homes
- c) A military camp



17 PARTNERSHIPS FOR THE GOALS

What is needed to achieve the 17 Sustainable Development Goals?

- a) The involvement of all countries
- b) The developed countries leading the change
- c) The developing countries leading the change



SUSTAINABLE DEVELOPMENT GOALS

1 NO POVERTY

In 1990, almost four in ten people (38%) lived in extreme poverty. How many people live in extreme poverty now?

- a) 1 in 10
- b) 3 in 10
- c) 5 in 10



2 ZERO HUNGER

What is malnutrition ?

- a) When you don't have a three-course meal
- b) When you don't eat meat every day
- c) When you don't eat enough healthy food for a certain period of time



3 GOOD HEALTH

Which of these insects has helped spread the disease malaria?

- a) Mosquitoes
- b) Dragonflies
- c) Fireflies



4 QUALITY EDUCATION

What percentage of adults today are literate, meaning they can read and write?

- a) 80%
- b) 60%
- c) 30%



5 GENDER EQUALITY

What percentage of researchers in science and technology are women?

- a) 50%
- b) 30%
- c) 70%



6 CLEAN WATER AND SANITATION

What percentage of water in the world is potable?

- a) Only 3 %
- b) Half of all water, 50 %
- c) Almost all of it, 97%



7 RENEWABLE ENERGY

Which of these is a renewable energy source?

- a) Oil
- b) Gas
- c) Sunlight



8 DECENT WORK AND ECONOMIC GROWTH

True or false: every adult possesses a bank account.

- a) True
- b) False



9 INDUSTRY, INNOVATION AND INFRASTRUCTURE

What infrastructure is important for quality education?

- a) Playgrounds and snacks
- b) Clean schools, teachers and books
- c) Soft beverage dispenser



10 REDUCED INEQUALITIES

We can fight inequalities by:

- a) Making sure that all children have access to a good education
- b) Making sure that everyone is wearing the same clothes
- c) Making sure that everyone watch the same TV



11 SUSTAINABLE CITIES AND COMMUNITIES

In 2030, what percentage of the world's population will live in urban areas?

- a) 60%
- b) 100%
- c) 20%



12 RESPONSIBLE CONSUMPTION AND PRODUCTION

How do bees help our environment?

- a) They help plants grow and make food
- b) They do not help, they just make honey
- c) They eat other insects



13 CLIMATE ACTION

In 2015, where did world leaders agree to a plan for our climate?

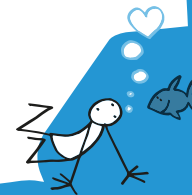
- a) Paris (Paris Agreement)
- b) London (Big Ben Agreement)
- c) New York (The Manhattan Agreement)



14 LIFE BELOW WATER

Plastic bags are dangerous for turtles because sometimes they think they are...

- a) Food
- b) A toy
- c) A shell



15 LIFE ON LAND

Trees are essential because...

- a) They are a habitat for wildlife
- b) You can climb them
- c) Plastic is produced from trees



16 PEACE, JUSTICE AND STRONG INSTITUTIONS

What is child displacement?

- a) When a child goes on holiday
- b) When a child is displaced due to armed conflict
- c) When a child spends the night at a friend's home



17 PARTNERSHIPS FOR THE GOALS

Who should be involved in partnerships to achieve the 17 SDGs?

- a) Citizens
- b) Governments
- c) Companies
- d) All of the above



SUSTAINABLE DEVELOPMENT GOALS